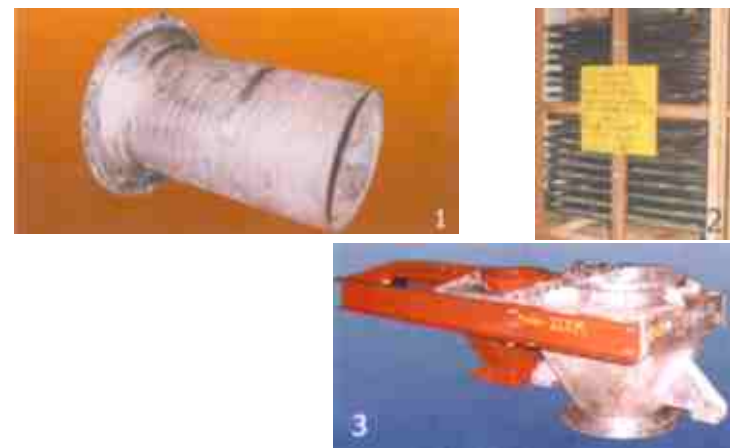


Stainless Steel

- Description : **30" Pelletiser Rotor Assembly**
 M.O.C : SS316L
 Inspection : Dutsun
- Description : **Agitator Tank**
 M.O.C : SS316L
 Inspection : Dutsun
- Description : **2" Nb Sch. 40 Coil**
 M.O.C : SS304
 Inspection : Bharat Dairy



Exotic Material



- Description : Incoalloy Shell Rolling
 M.O.C : Incoalloy 800 Ht
 Weight : 1500 Kgs.
 Inspection : Bvis
- Description : Calcine Cooler
 M.O.C : Alloy Steel Fabricated For Lurgi Of Germany
- Description : Lower Slide Gate Assembly
 M.O.C : Incoally 800 Ht
 Weight : 1500 Kgs.
 Inspection : BVIS

- Description : Bourden Feeder Shaft For Furnace
 M.O.C : 15 Moz. With Incoally 800 Ht
 Size : 600 O.D. X 8000 Lg X 50 Thk.
 Inspection : Essar Steel
 Special : Welding Of 800 Ht Forged Lugs On UBF Shaft
- Description : Upper Bourden Feeder Shaft
 M.O.C : SA204 Gr.B
 Size : 600 O.D. X 8000 Lg X 50 Thk.
 Inspection : Essar Steel,
 Bearing Size on Either Side Tolerances Within 0.03 To 0.07mm.



Technology Export Development Organisation

A project of Confederation of Indian Industry (CII) & DSIR, Govt. of India
 Plot No. 249 F, Sector 18, Udyog Vihar, Phase-IV
 Gurgaon - 122015 (Haryana), INDIA
 Tel. : 91-124-4101044 (D), 4014060-67, Fax : 91-124-4014080
 E-mail : info@techbizindia.com Website : www.techbizindia.com

Icem Engineering Company Ltd.

Estd. : 1969

ISO : 9001-2000

ICEM Engineering Company Limited is one of the leading engineering & heavy fabrication company in India. Company is engaged in Design, Manufacturing and installation of Special Process Equipments and Machinery.

Products

Reaction Vessels

Agitators,

Heat Exchanger

Reboiler

Silos & Columns

Application Industry

- Chemical Industry
- Petrochemical Industry
- Pharmaceutical Industry
- Fertilizer & Allied Industries

Consultancy

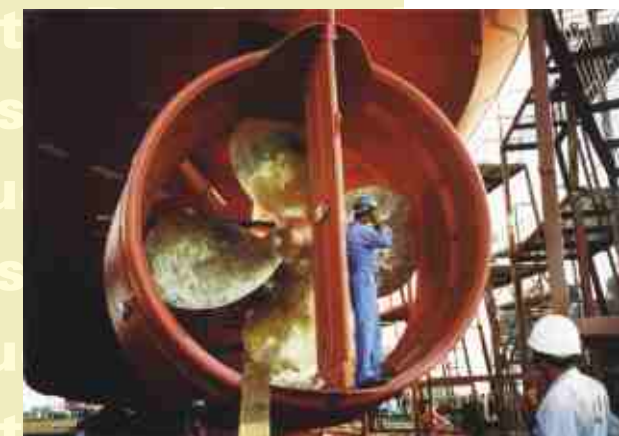
Installed capacity of Major Products

Material Handled / Used

- Low Carbon Steel
- Stainless Steel
- Aluminium
- Monal

Third party Inspection Agencies Recognition

- LRIS
- BVIS
- EIL
- CIB
- KPG
- H&G
- LURGI
- DNV
- BARC
- IBR



Major Customers	
<ul style="list-style-type: none"> R.C.F Cabot India, BASF India Ltd Lubrizol India Ltd., ICI Ltd., Indian oil Corporation Limited 	<ul style="list-style-type: none"> Bharat Petroleum Corporation Limited Reliance Industries Limited Bayer India Limited. Ion Exchange India Limited, Dorr Oliver Limited Essar Steel

Infrastructure

- Manufacturing locations in.....
- ICEM employ..... Technical Manpower

Manufacturing Facilities

- Rolling machine for plates upto 32 mm. Thickness & 2500 mm. Width.
- Hydraulic presses with capacity ranging from 150 tonnes to 1500 tonnes.
- Computerised Designing techniques on auto cad:
- Plasma cutting facility for thickness upto 120 mm.
- Oil fired furnaces for heat treatment
- EOT crane upto 20 tonne capacity
- Complete range of Testing Facilities



Major Inspection and Testing

ICAM inspection and Testing team select & buy proper material from reputed suppliers, conducts stringent stage wise inspection & testing with a view to ensure quality of the finished product. ICAM have in house testing facility include physical & mechanical testing & all destructive & non-destructive tests.



Financials

Year	Turnover (USD)	Exports (USD)	R & D Expe. (USD)
2002-2003			
2003-2004			
2004-2005			

Export Country

Technology Arrangement

- Joint Venture
- Manufacturing Licence
- Marketing

Carbon Steel

- Description : **V.D. Vessel**
 M.O.C : IS2002 GR.11 (Carbon Steel)
 Weight : 60/70T
 Inspection : G.A.Danieli
- Description : **Water Softening Plant**
 M.O.C : Carbon Steel



- Description : **250T. EOT. Crane Rope Drum**
 M.O.C : Is 2062
 Size : 1750 Dia. X 2400 Lg. X 60mm Thk
 Inspection : T.C.E.
- Description : **Laddles**
 M.O.C : Carbon Steel
 Size : 3000 ID. X 45Thk.
 Inspection : Dutsun

- Description : **Pressure Vessel**
 M.O.C : Sa516 Gr.70
 Size : 5000 I.D. X 22mm Thk.
 Inspection : LRIS
- Description : **Hand Hole Ring**
 M.O.C : Carbon Steel
 Size : Various Sizes
 Inspection : I.B.R.

